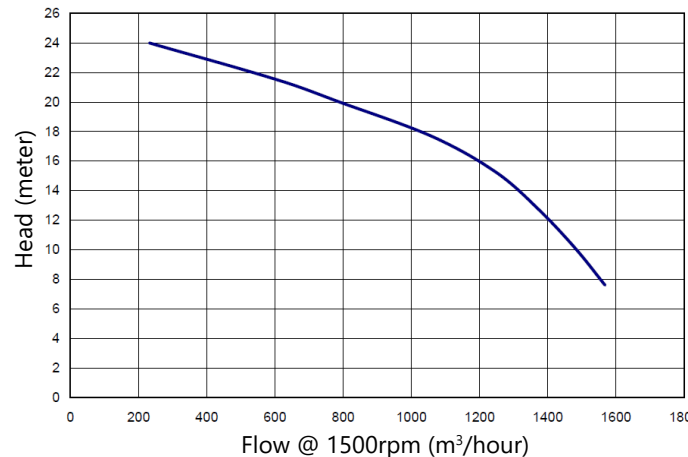
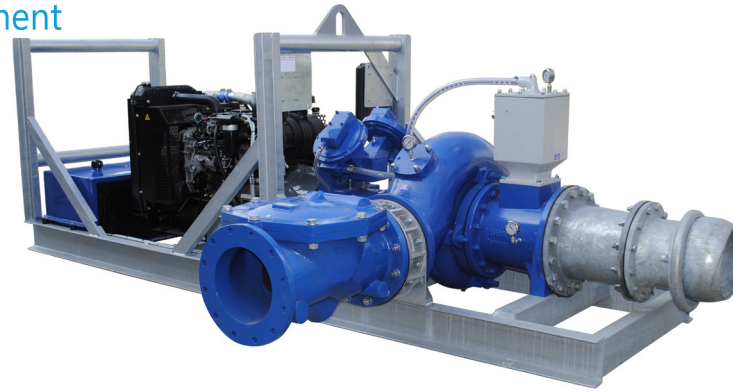




Technical Data

Model of pump	BA300K D324
Type of pump	Diesel Pump
Width	1,120mm
Length	4,000mm
Height	1,530mm
Dry weight	3,000kg
Inlet diameter	12 inch (300mm)
Outlet diameter	12 inch (300mm)
Solids handling	100mm diameter
Engine	Perkins 1104D-44TA
Fuel consumption	25 lph @ 1500 rpm 20 lph @ 1400 rpm 16 lph @ 1300 rpm
Maximum flow	1400m ³ /hr (390 l/s)
Maximum head	18m
Maximum operation speed	Engine: 1500rpm Pump: 1500 rpm
Medium	Liquid, sewage, slurry



BA300K Diesel Pump Specification

The BA300K is an extremely efficient dewatering and sewage pump. It offers one of the best pump capacity to fuel consumption ratios in the market.

It offers pumping capacity up to 390l/s whilst consuming only 19 ltr/hr, nearly half the fuel consumption of rival pumps. It achieves this by having an optimum discharge head capacity of up to 18m. This makes it the pump of choice for overpumping, bypass and diversion jobs where discharge heads are relatively low.

WJ Groundwater have successfully used the BA300K for diverting sewage at several pumping stations, finding that the semi-open impeller is extremely resistant to blocking from rags and debris.

In summary the BA300K is a high efficiency pump that minimises fuel consumption, and offers reliability and confidence.

Contact us today for further information.
*Available for hire with operator.

www.wj-me.com
info@wj-me.com