

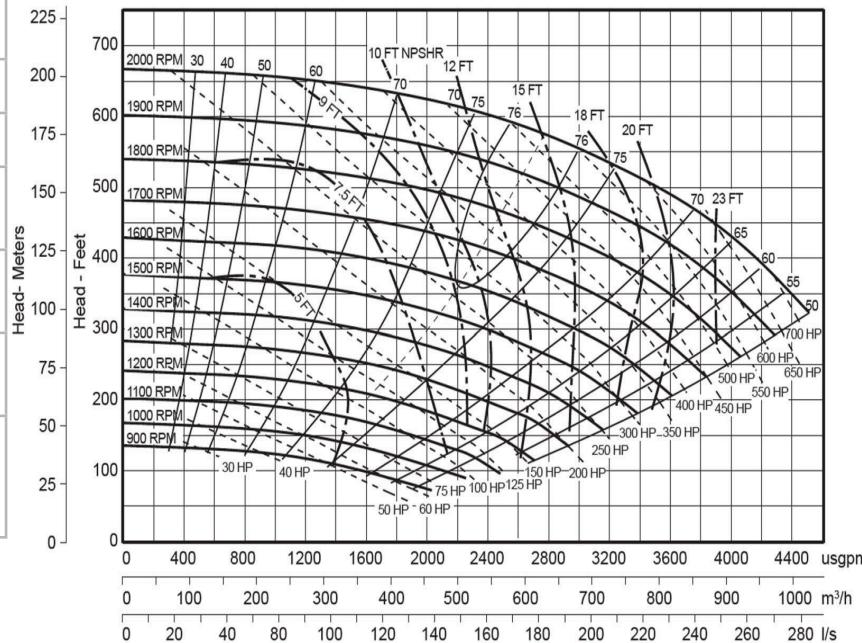
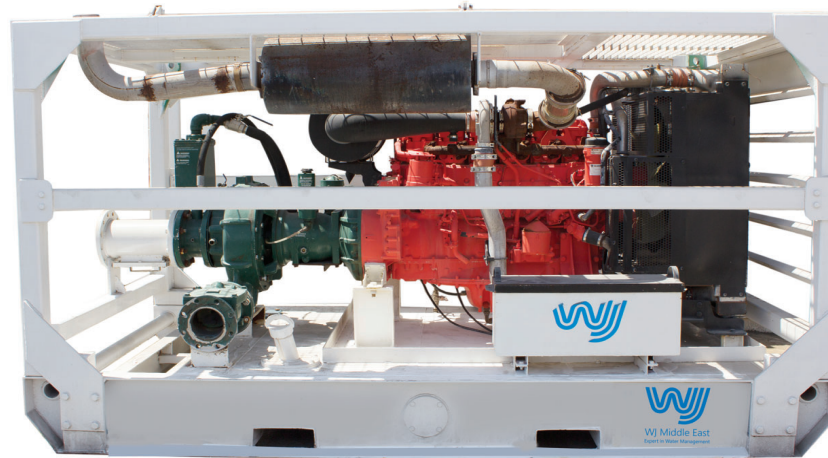


**WJ Middle East**  
Expert in Water Management

# PP86C21 Diesel Pump Specification

## Technical Data

Model of pump	PP86C21
Type of pump	Diesel
Width	1950mm
Length	3600mm
Height	2050mm
Dry weight	5300kg
Inlet diameter	8 inch (200mm)
Outlet diameter	6 inch (150mm)
Solids handling	40mm diameter
Engine	Scania DC13 074A 257kW
Maximum flow	700m <sup>3</sup> /hr
Maximum head	160m
Maximum operation speed	1800rpm
Best Efficiency Percentage	76%
Priming Vacuum Capacity	50cfm
Medium	Oil & Gas, Industrial, Petrochemical



The PP86C21 is a high pressure, high flow, heavy duty surface pump ideal for your projects.

Designed to operate over broad range of performance while delivering outstanding suction lift.

The rugged construction and modular design provide proven reliability and flexibility in the most demanding application.

Application:

Firefighting, Irrigation, Mine Drainage, Power Plant & Water Supply.

The pump offers a high level of fuel efficiency and brings fuel saving to your projects.

Call WJ Middle East today for more info.

\*Available for hire with operator and accessories including valves, NRV, hoses, flow meter and filtration pods.

[www.wj-me.com](http://www.wj-me.com)  
[info@wj-me.com](mailto:info@wj-me.com)

WJ-EQ-PUMP-SPEC-PP86C21